

ASCI A recommends an eHF for the first line management of formula-fed infants with CMPA¹

Lowest
allergenicity
profile of all
whey-based
eHFs tested³

Tolerated by
>98% of infants
with confirmed
CMPA²

The first
and only eHF
with two HMOs
plus lactose



**EXTENSIVE HA™ is not the
same as other eHFs**

Small Peptides, Big Difference

Cow's Milk Protein Allergy (CMPA) is a common immune reaction to dairy proteins, seen in infants and young children, triggering skin, gastrointestinal and respiratory symptoms.^{1,2}

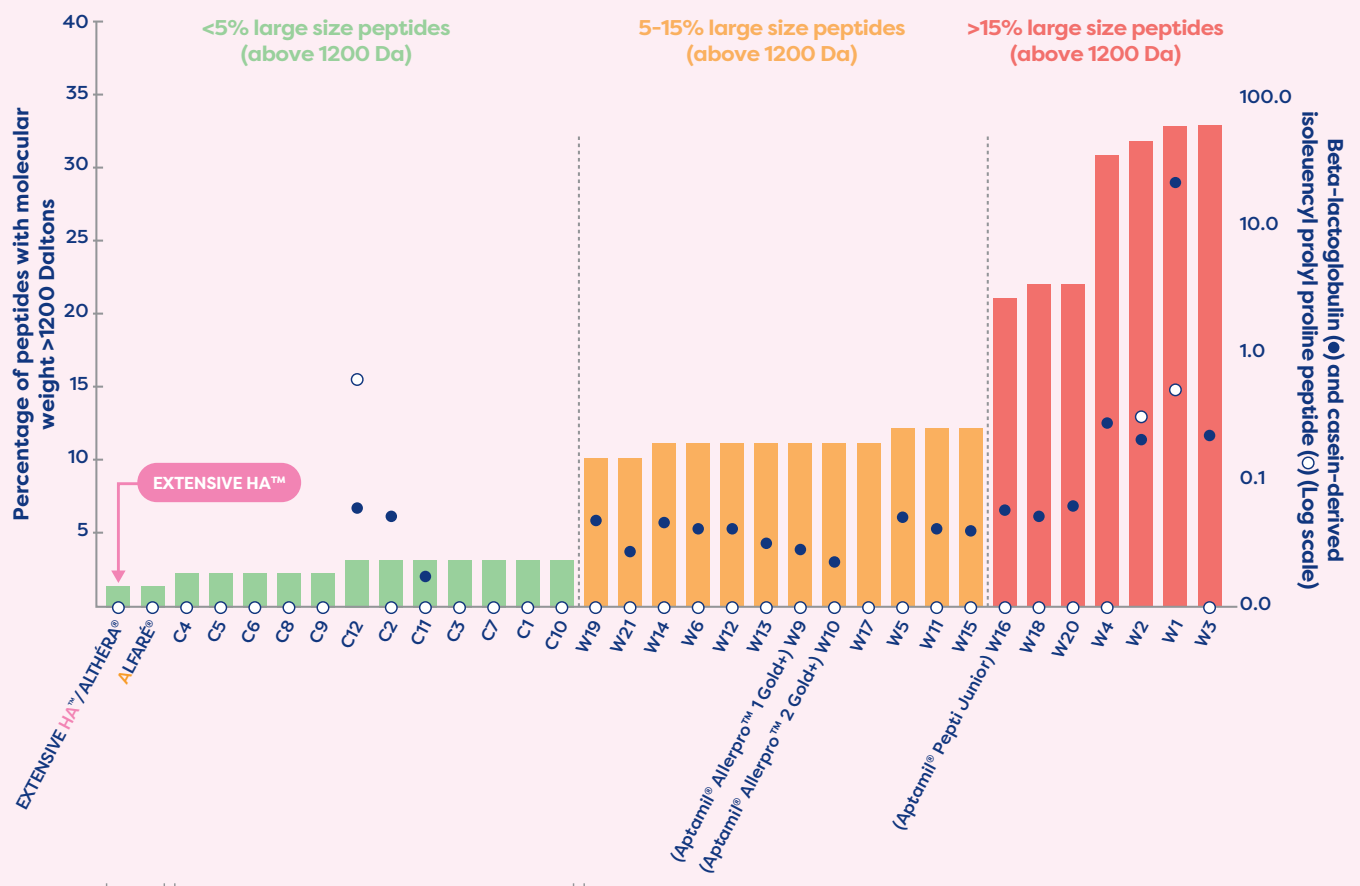
The effectiveness of an Extensively Hydrolysed Formula (eHF) in managing symptoms of CMPA depends on several factors including peptide size and residual allergenicity.^{3,4}

Allergic reactions are typically triggered by larger peptides.^{3,4}



Extensive HA™ supports symptom relief and optimum growth¹¹

EXTENSIVE HA™ / ALTHÉRA® has the lowest allergenicity profile of all whey-based eHFs, greatly minimising the risk of an allergic reaction^{4^}

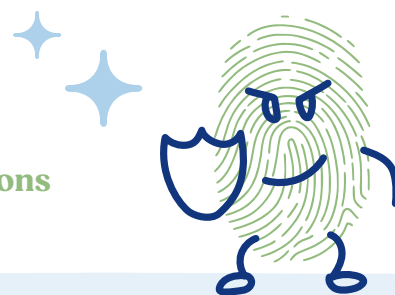


C1: Similac® Alimentum; C2: Nutriben® Hidrolizada 1; C3: Friso Pep AC; C4: Nutramigen; C5: Nutramigen LGG®; C6: Nutramigen LGG® 1; C7: Nutramigen® Lipil 1; C8: Pregestimil Lipil; C9: Nutramigen LGG® 2; C10: Nutramigen® Lipil 2; C11: Allernova AR; C12: Damira® 2000; W1: Friso PEP; W2: Picot® Pepti Junior 1; W3: Picot® Pepti Junior 2; W4: Picot® Pepti Junior® / Croissance 3; W5: Aptamil™ Pepti 1; W6: Aptamil™ Pepti 2; W9: Aptamil® Allerpro™ 1 Gold+; W10: Aptamil® Allerpro™ 2 Gold+; W11: Nutrilon™ 1 Allergy Care; W12: Nutrilon™ 2 Allergy Care; W13: Nutrilon Pepti 1; W14: Nutrilon® Pepti 1 ProExpert; W15: Nutrilon® Pepti 2 ProExpert; W16: Aptamil® Pepti Junior; W17: Galliagene®; W18: Nutrilon® 1 Allergy Digestive Care; W19: Nutrilon™ Pepti 2; W20: Pepti Junior®; W21: Pepticate®.

[^]Commercially available products at the time of the study. EXTENSIVE HA™ has the same peptide profile as ALTHÉRA® in the study.

The first and only eHF with 2 HMOs (2'-FL and LNnT) plus lactose to nurture infants' immune system^{2,3,5-10}

CPMA is characterised by increased gut permeability and gut microbial imbalance (dysbiosis).^{3,11} This can impair immune system maturation and put infants at increased risk of infections and future allergies.^{3,11}



Growing evidence shows that infants with and without CPMA, who consumed formula with HMOs (2'-FL and LNnT) have shown:

- Selective growth of beneficial gut microbiota^{*5,11}
- A reduction in infections^{*†11,12}
- A reduction in antibiotic and antipyretic medication over 12 months.^{*†11,12}

Infants with CPMA who were fed EXTENSIVE HA™¹²

(Age: 3.2 to 12 months; mean trial duration: 8.8 months)



-34%
RRR* of lower respiratory tract infections ($p=0.251$)[†]



-71%
RRR* of ear infections ($p=0.17$)[†]



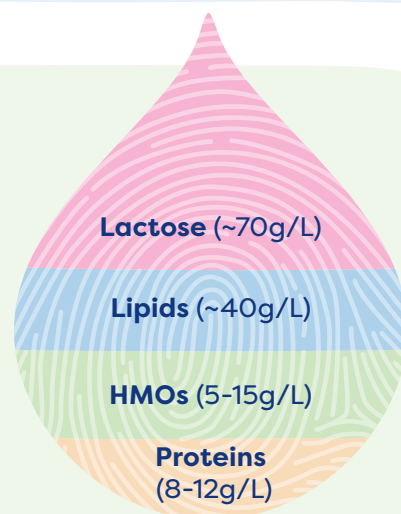
-42%
Reduced frequency of upper respiratory tract infection episodes ($p<0.05$)^{*†}

The nutritive and bioactive components of breast milk

Lactose is the main solid component of human breast milk⁶⁻⁹ and supplies ~40% of an infant's energy needs.

In early infancy, unabsorbed lactose from breast milk acts as a natural prebiotic, promoting bifidobacterial growth and increasing short-chain fatty acids—key for colonic integrity and immune maturation.^{6,9}

HMOs (Human Milk Oligosaccharides) – 2'-FL and LNnT comprise over 30% of the HMOs in breast milk.⁶⁻⁹



HMOs** and lactose** support infants' immune systems through 4 mechanisms:⁶⁻⁹



HMOs and lactose support the growth of beneficial bacteria in the gut



HMOs strengthen the gut barrier

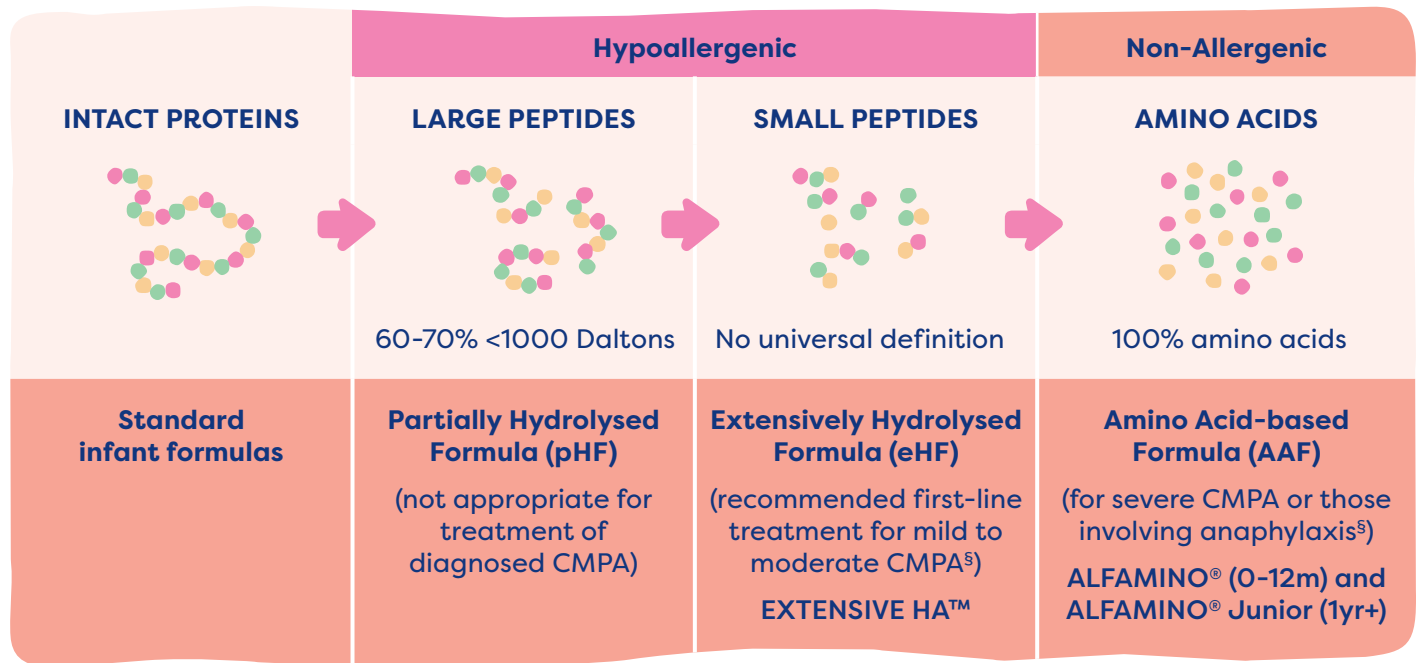


HMOs help eliminate pathogens in the gut



HMOs guide the maturation of the immune system

Specialised Formulas and CMPA Management



⁵Infants with food allergies must be managed under the supervision of a qualified healthcare professional.



EXTENSIVE HA™

Extensively Hydrolysed Specialised Infant Formula suitable for babies with Cow's Milk Protein Allergy. Nutritionally complete and suitable as a sole source of nutrition from birth or supplementary feeding from 6 months of age.

ORDERING INFORMATION

Units/Case	6 x 400g
Product Code	12625267

EXTENSIVE HA™ formulation in Australia is the same as the ALTHÉRA® HMO formulation from Nestlé Health Science available globally.

To request free samples of EXTENSIVE HA™ for your professional evaluation, please scan the QR code and follow the short sign up process.



EXTENSIVE HA™ can be purchased by your patients at Chemist Warehouse without a prescription.

For more information call 1800 671 628 or visit www.nestlehealthscience.com.au

REFERENCES: 1. Australasian Society of Clinical Immunology and Allergy (ASCIA) Guide for Milk Substitutes in Cow's Milk Allergy Available at: <https://www.allergy.org.au/hp/papers/guide-for-milk-substitutes-cows-milk-allergy> Accessed: 8 August, 2025 2. Vandenplas Y, et al. JPGN. 2024;78(2):386-413. 3. Nowak-Węgrzyn A, et al. Nutrients 2019;11:1447. 4. Nutten S, et al. Allergy. 2019;75(6):1446-1449. 5. Boulangé CL et al. Int J Mol Sci. 2023 Jul 13;24(14):11422. 6. Francavilla R, et al. Pediatr Allergy Immunol 2012;23(5):420-427; 7. Bode L. Glycobiology 2012;22(9):1147-1162; 8. Donovan SM and Comstock SS. Ann Nutr Metab 2016;69(suppl 2):42-51; 9. Heine RG, et al. World Allergy Organ J 2017;10(1):41; 10. Van den Abbeele, P, et al. Beneficial Microbes 2024;16(2):171-185. 11. Puccio, G. et al. JPGN 2017; 64: 624-631. 12. Vandenplas et al. 2022. Nutrients. Jan 26;14(3):530.

All studies sponsored by Nestlé Health Science.

IMPORTANT NOTICE: Breast milk is best for babies and provides ideal nutrition. Good maternal nutrition is important for the preparation and maintenance of breastfeeding. Introducing partial bottle feeding could negatively affect breastfeeding and reversing a decision not to breastfeed is difficult. Professional advice should be followed on infant feeding. Infant formula should be prepared and used exactly as directed or it could pose a health hazard. The preparation requirements and weekly cost of providing infant formula until 12 months of age should be considered before making a decision to formula feed. Mothers should be encouraged to continue breastfeeding even when their infants have cow's milk protein allergy. If a decision to use an infant formula for special dietary use is taken, it must be used under medical supervision.

EXTENSIVE HA™ is a special medical purpose product for infants, formulated for infants with Cow's Milk Protein Allergy, for use only under medical supervision. This product is not suitable for general use. Not for parenteral use.

© Reg. Trademark of Société des Produits Nestlé S.A. Nestlé Healthcare Nutrition, a division of Nestlé Australia Ltd, 1 Homebush Bay Drive, Rhodes NSW 2138, Australia.

Information for healthcare professional use only. This detail aid was prepared in August 2025.

